

Figure 1

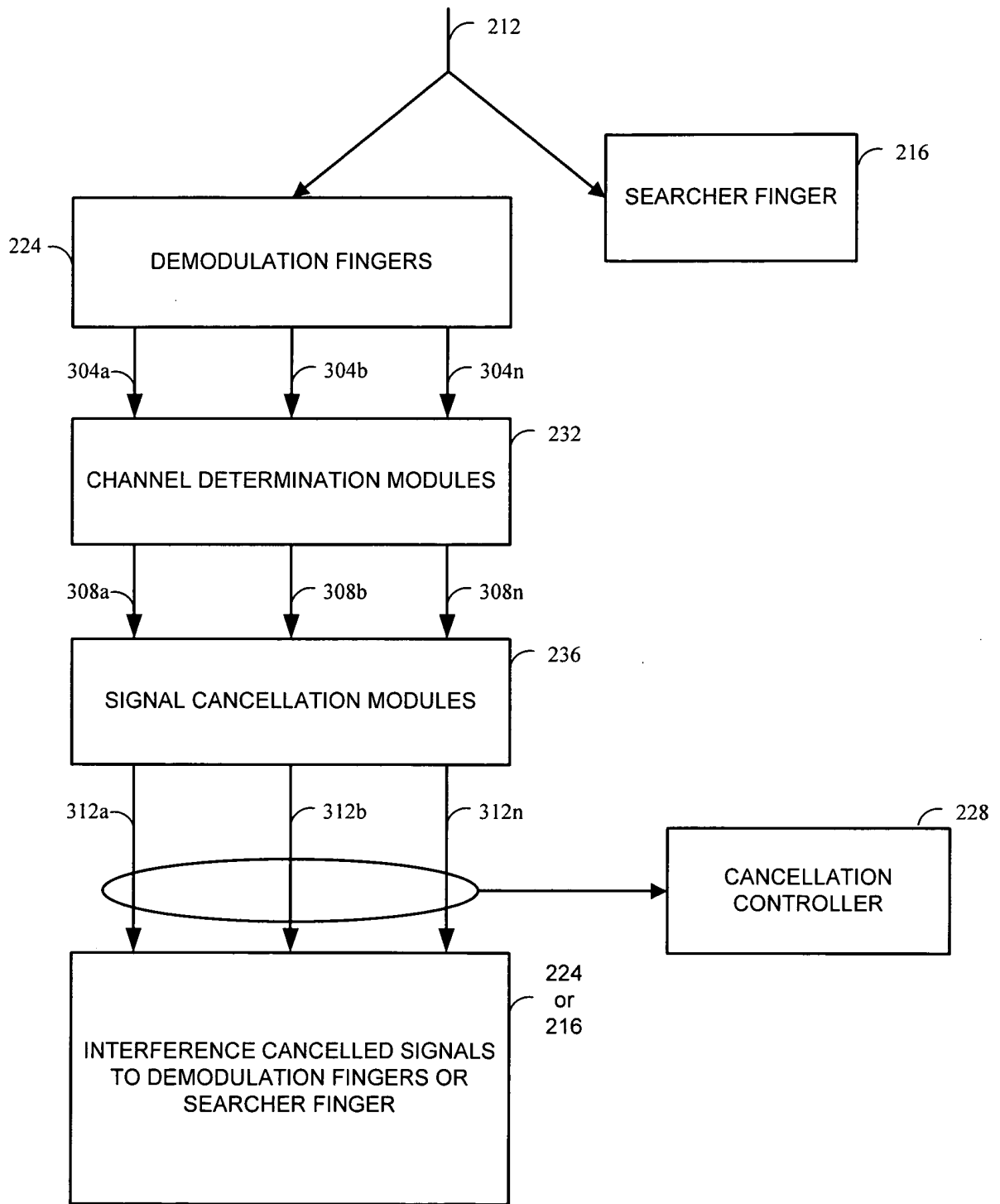


Figure 3

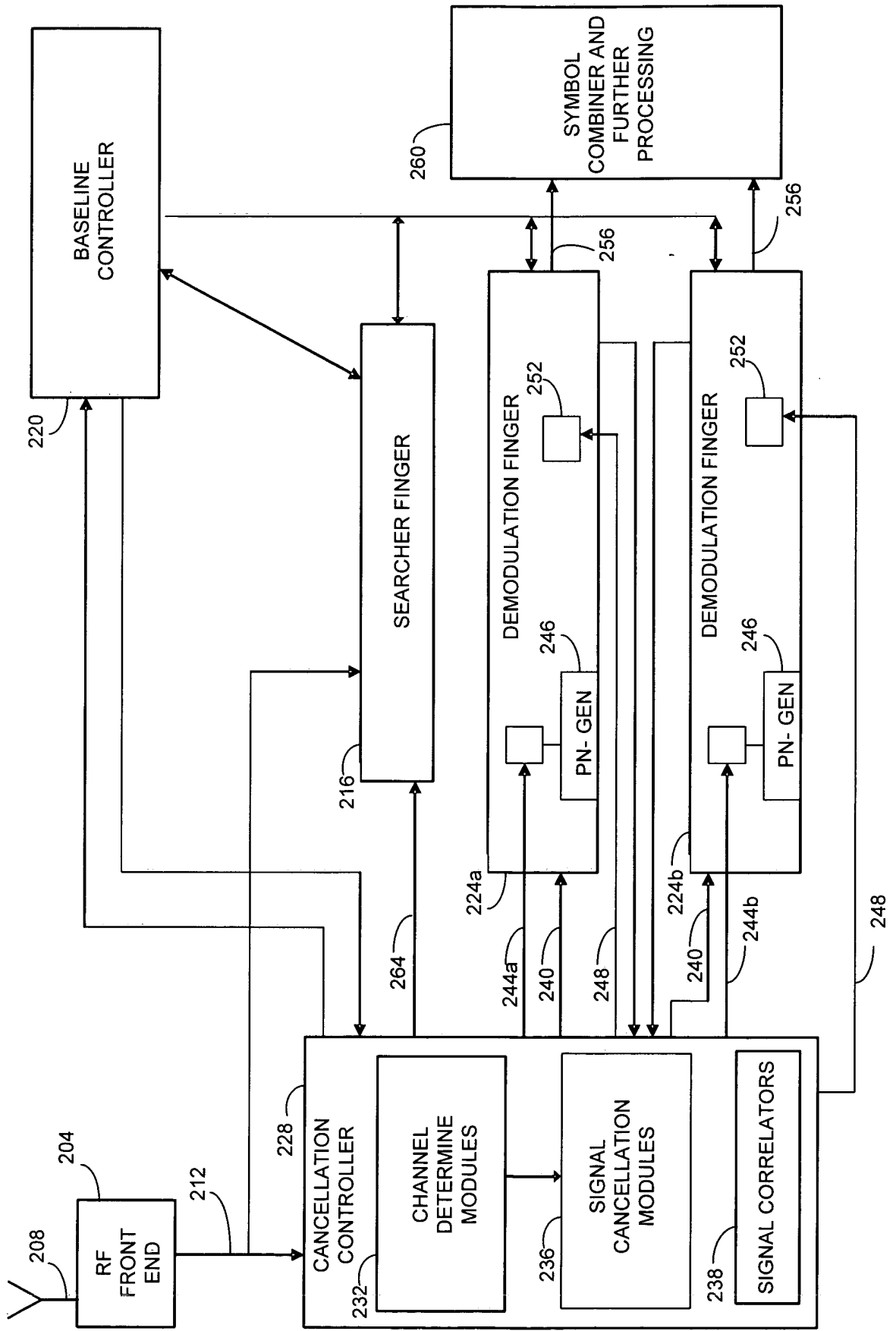


Figure 2

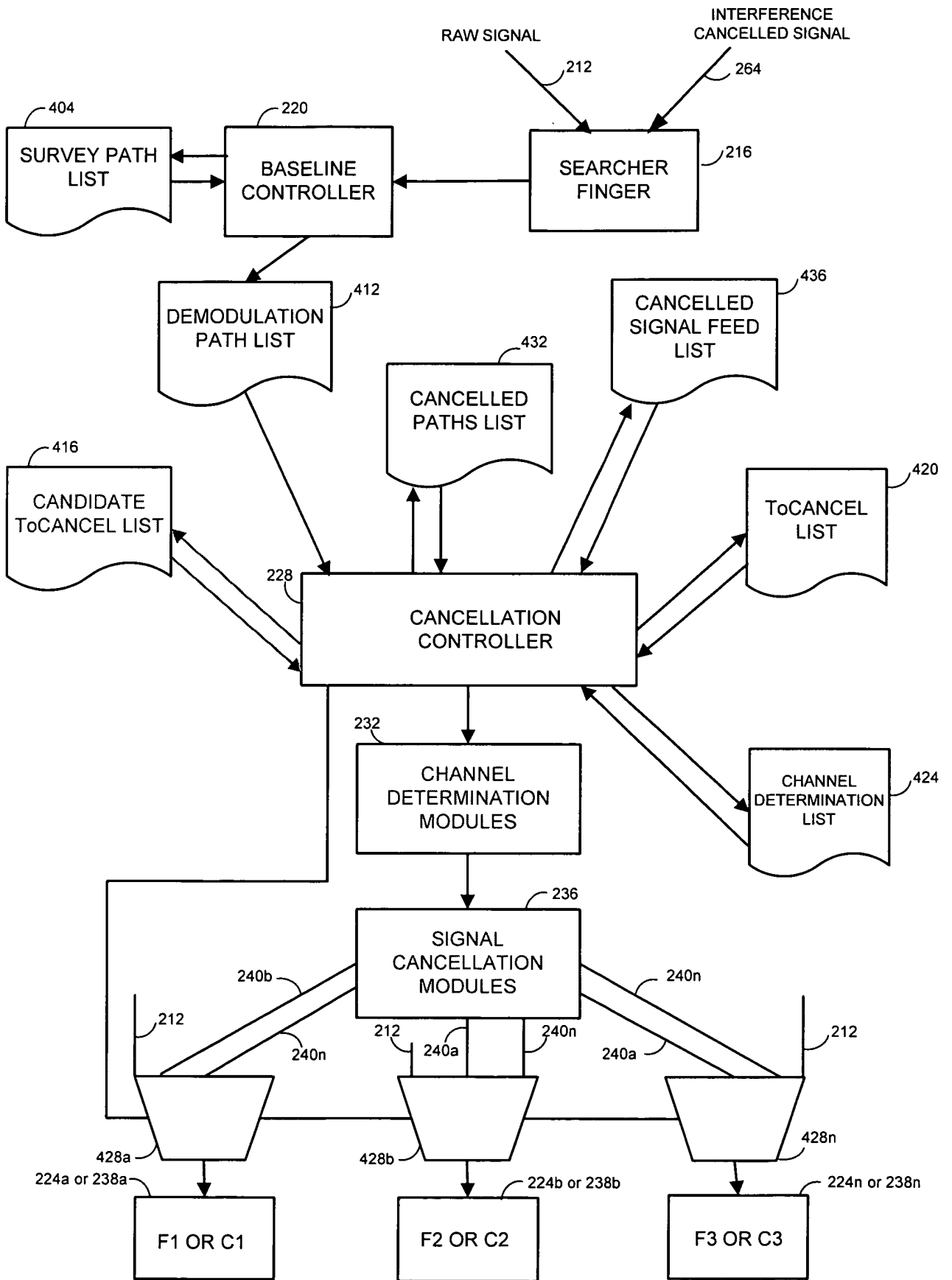


Figure 4

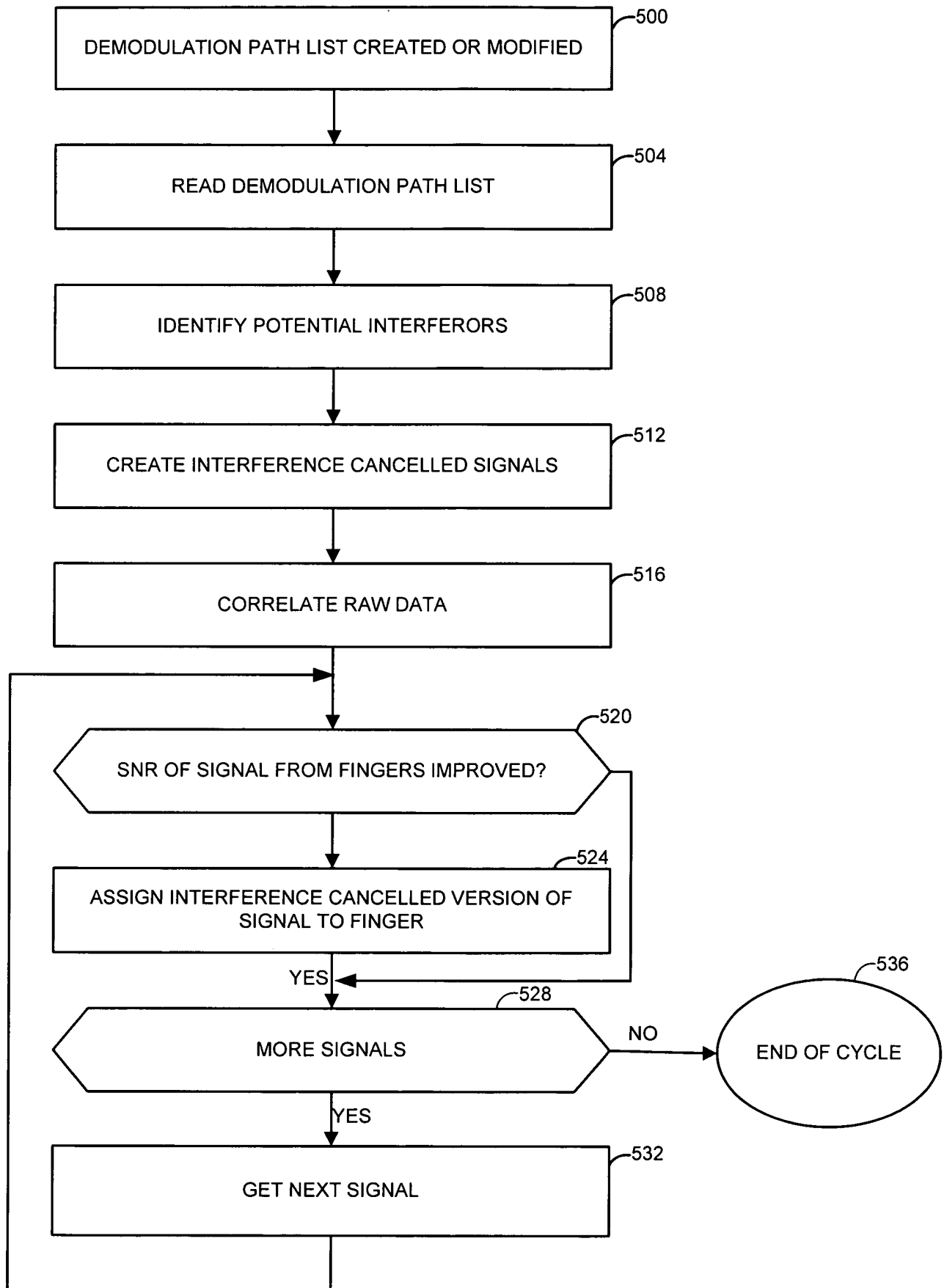


Figure 5

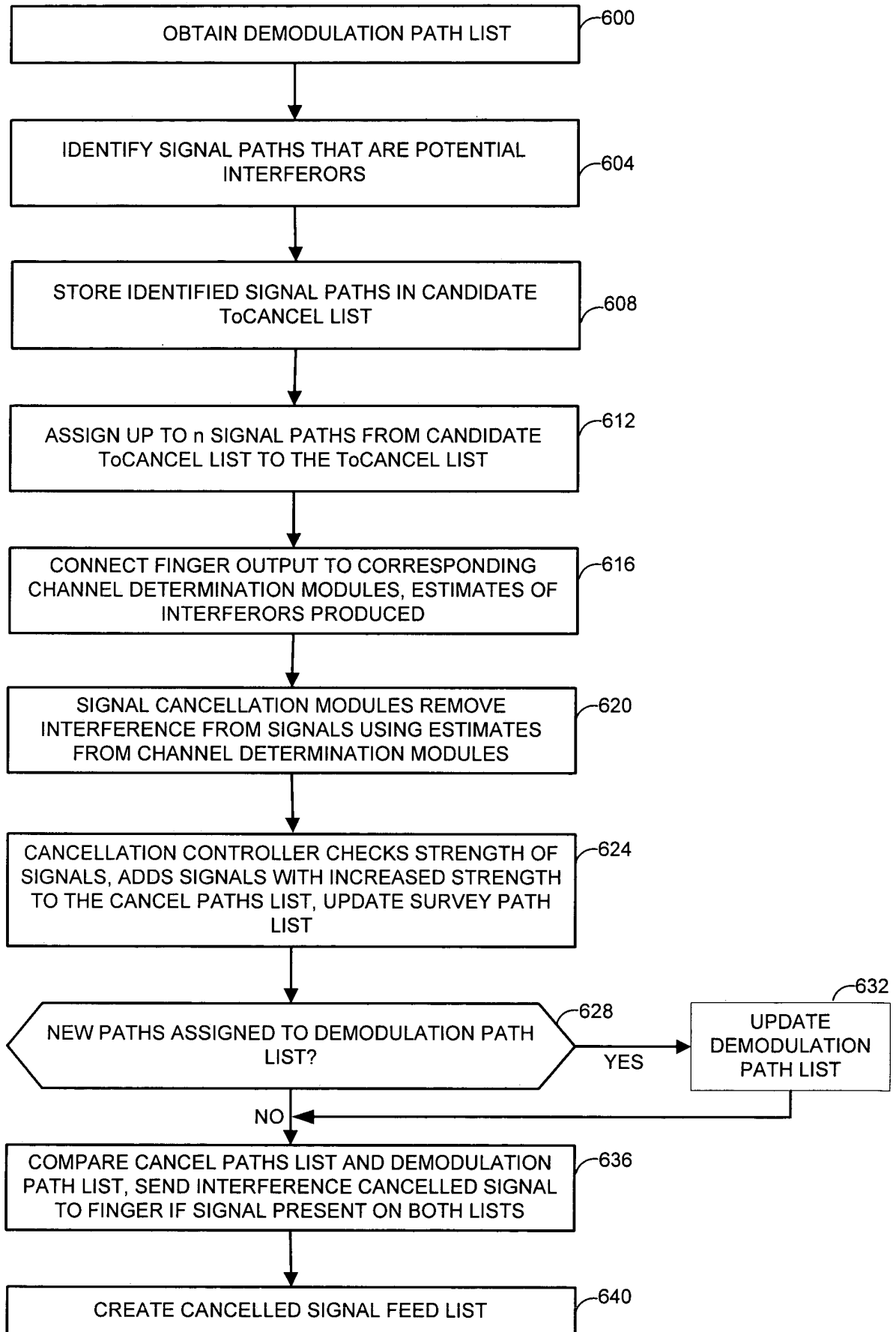


Figure 6

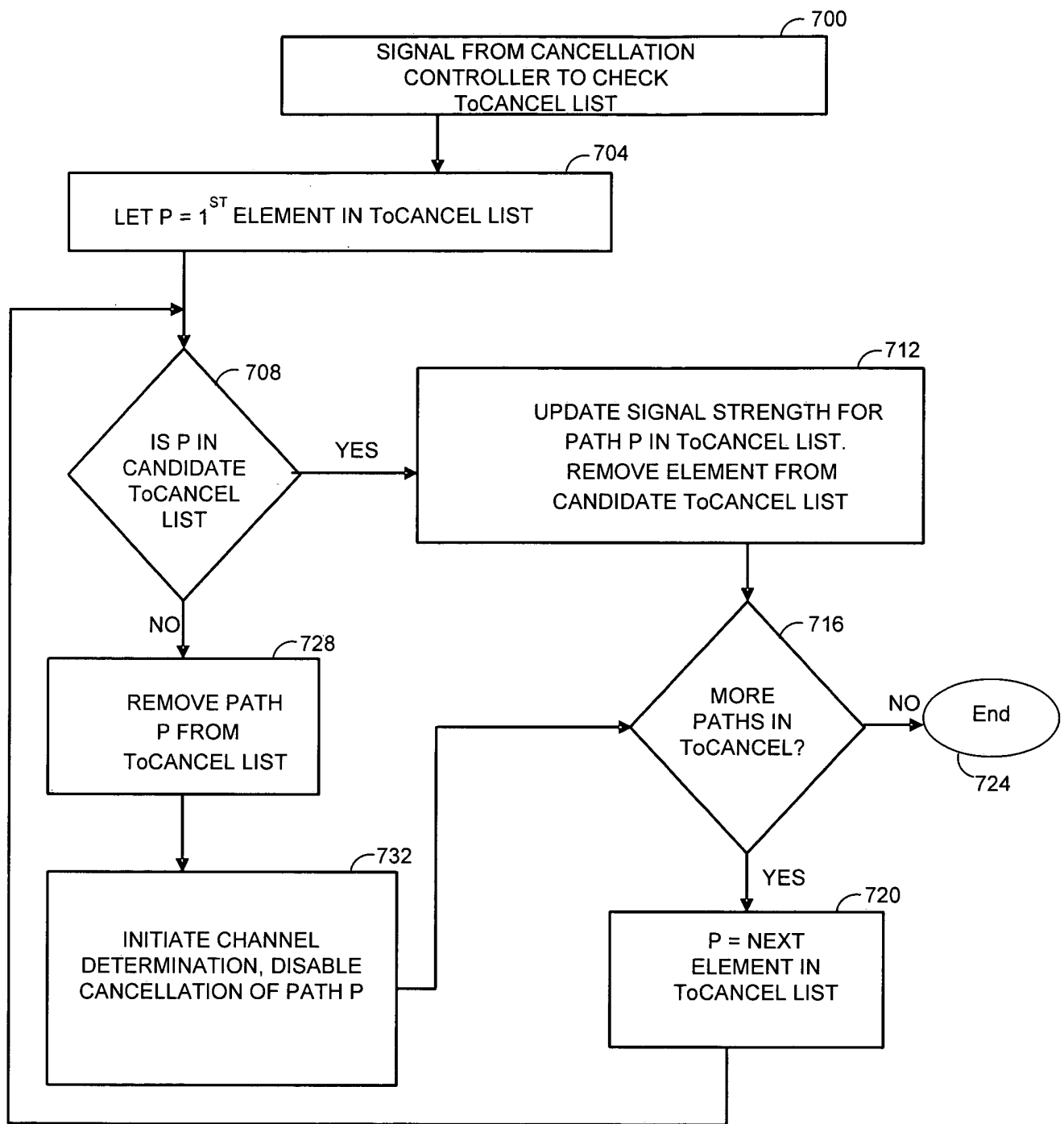


Figure 7

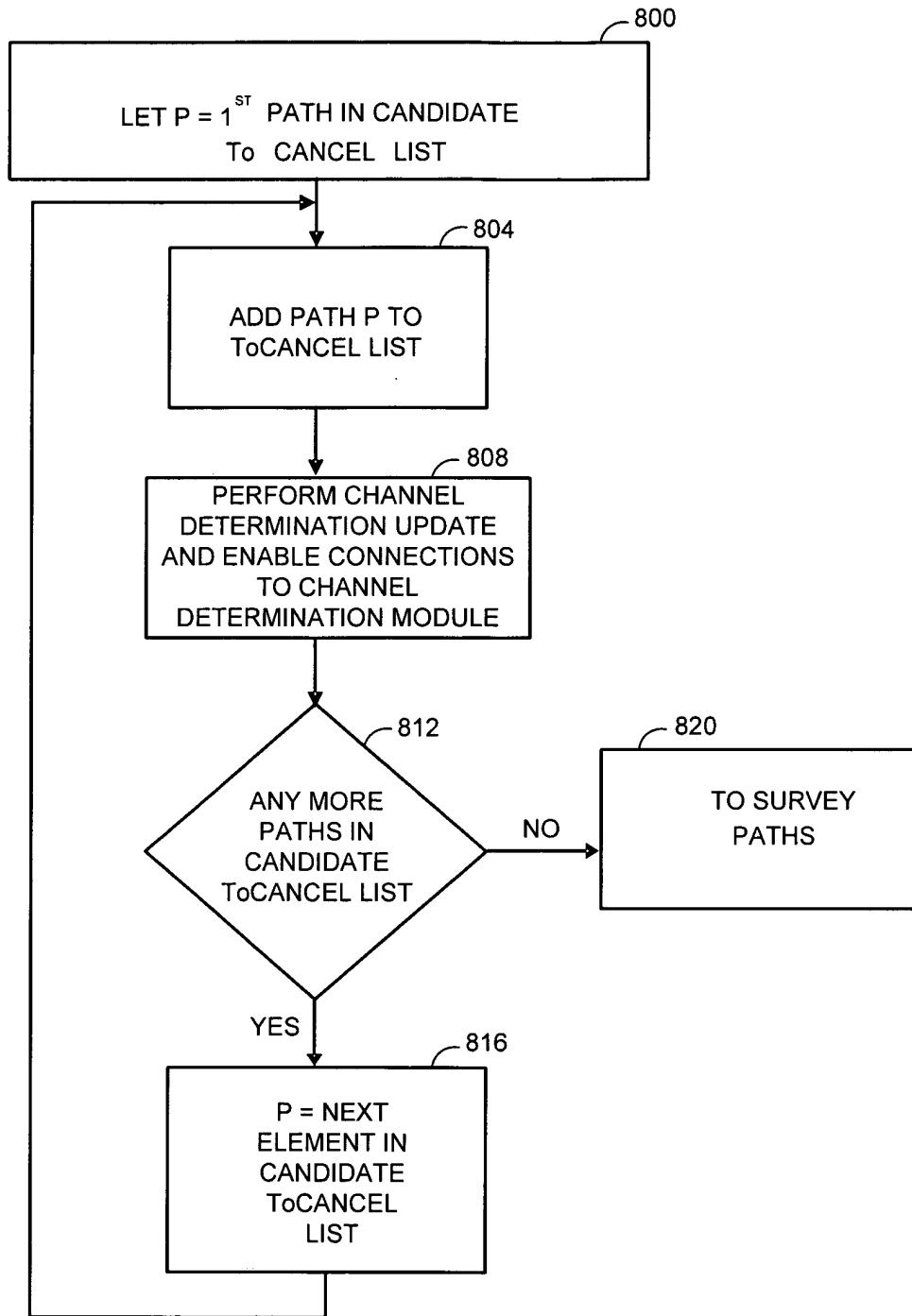


Figure 8

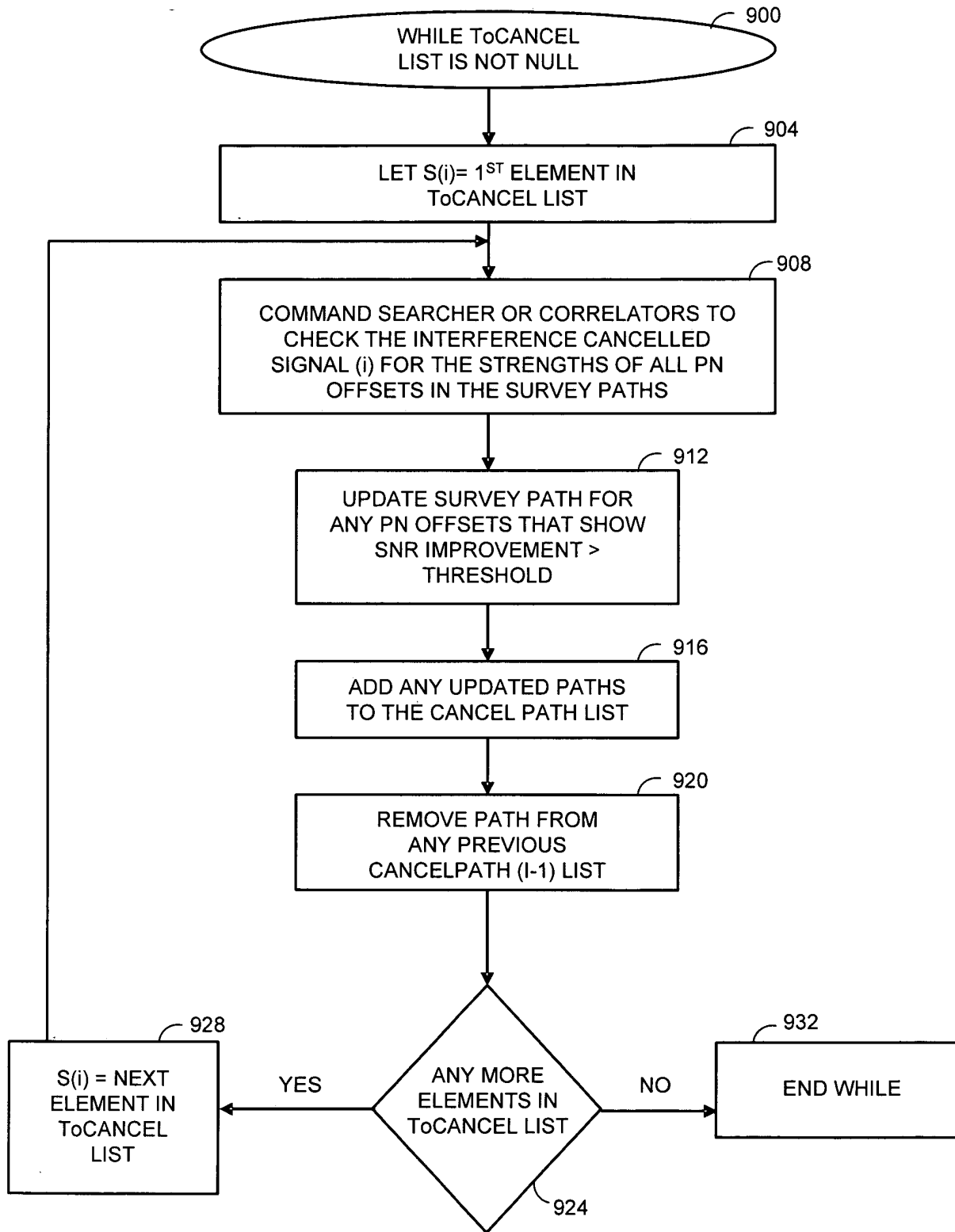


Figure 9

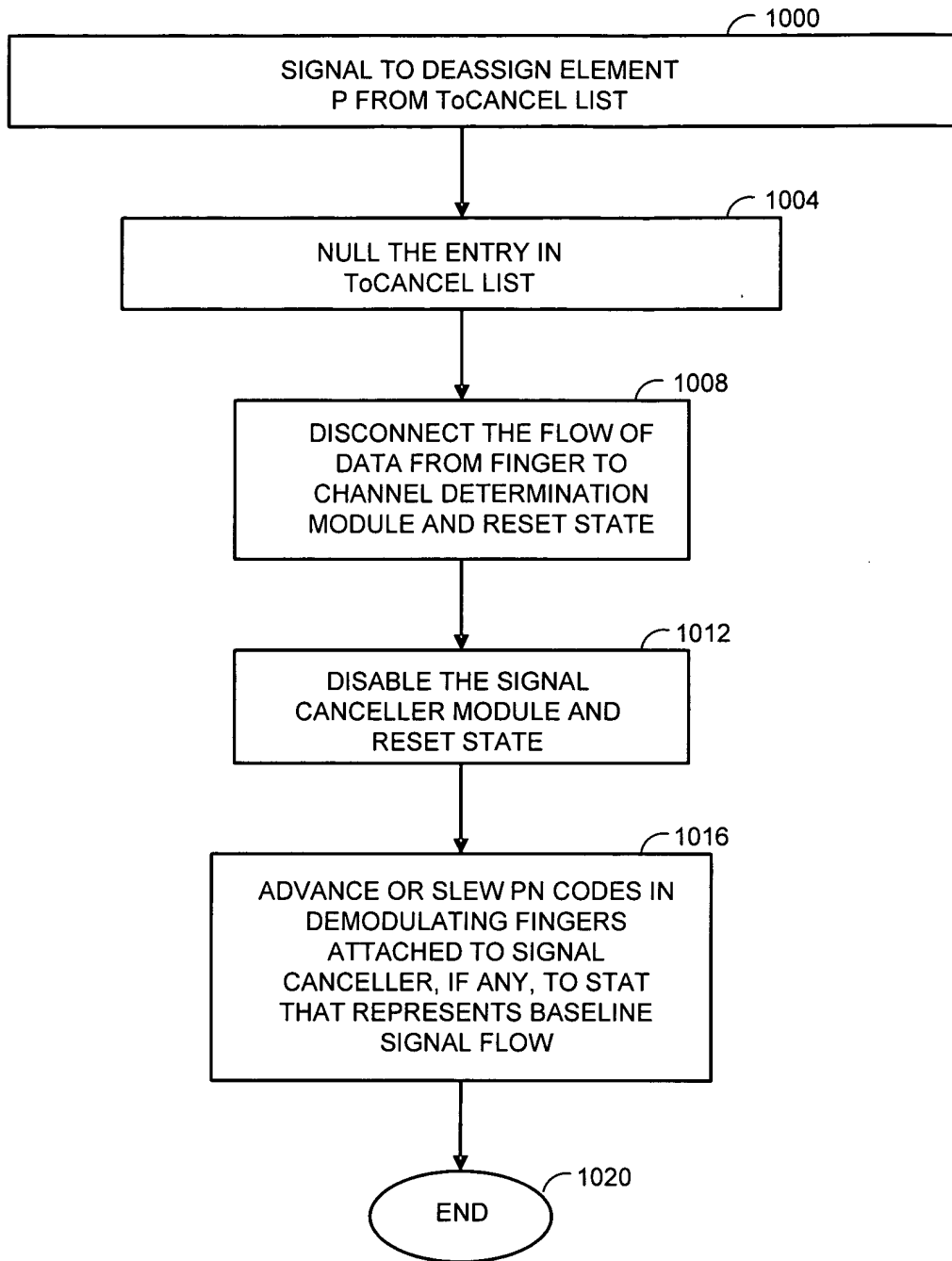


Figure 10

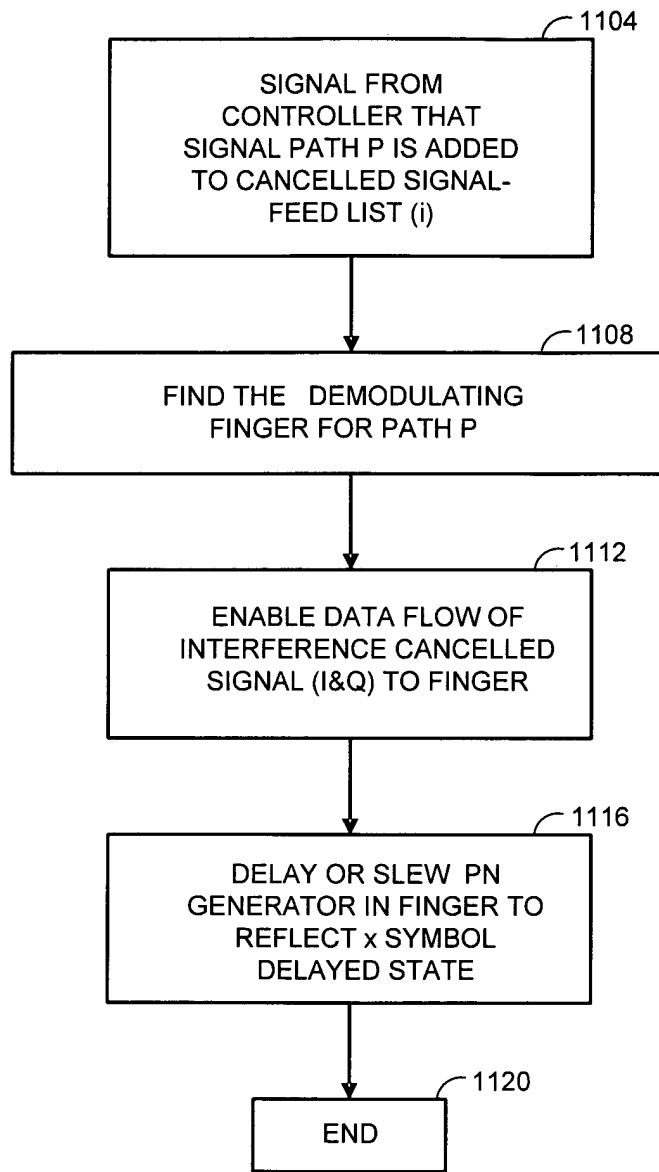


Figure 11

| CANDIDATE To CANCEL LIST | | | |
|--------------------------|-------------|-----------------|--------|
| DEMODULATING FINGER | SIGNAL PATH | SIGNAL STRENGTH | SECTOR |
| 1 | 1 | -5 dB | 1 |
| 2 | 1 | -15 dB | 1 |
| 3 | 2 | -9 dB | 2 |
| 4 | 3 | -12 dB | 1 |

Figure 12

| ToCANCEL LIST | |
|---------------------|-------------|
| DEMODULATING FINGER | SIGNAL PATH |
| 1 | 1 |
| 3 | 2 |
| 4 | 3 |

Figure 13

| CANCELLED PATHS LIST | |
|--------------------------|----------------------------|
| SIGNAL PATH (TRACKED) | SIGNAL PATH (CANCELLED) |
| 1 | 2 3 |
| 2 | 1 3 |
| 3 | 1 |

Figure 14

| CANCELLED SIGNAL FEED LIST | | |
|----------------------------|-----------|----------------|
| DEMOMULATING FINGER | CANCELLER | CANCELLED PATH |
| 1 | 1 | 2, 3 |
| 2 | 2 | 1, 3 |
| 3 | 3 | 1 |

Figure 15